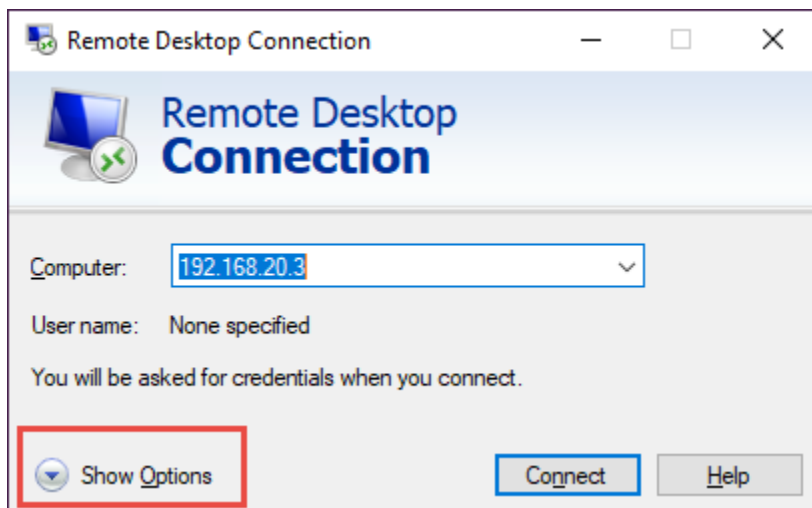


Remote desktop tips

With many of our clients working at home, we thought it might be helpful to talk about some of the options available to you when you use *Remote Desktop Connection* to connect to another computer.

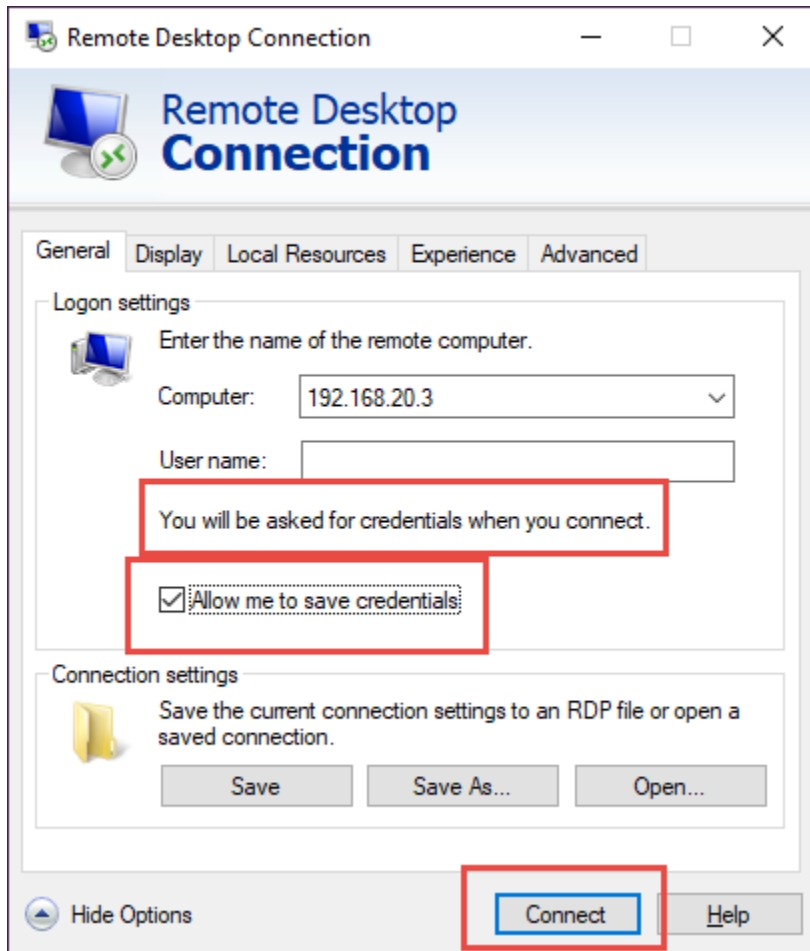
We have instructed our clients to put their remote computer's IP address in the Computer field of the Remote Desktop Connection dialog box. In most cases, the computer's name will work as well, but the IP address, if you know it, is more reliable.

There are more options available that can make using RDP (remote desktop connection) more useful. These options are available when you click the **Show Options** button.



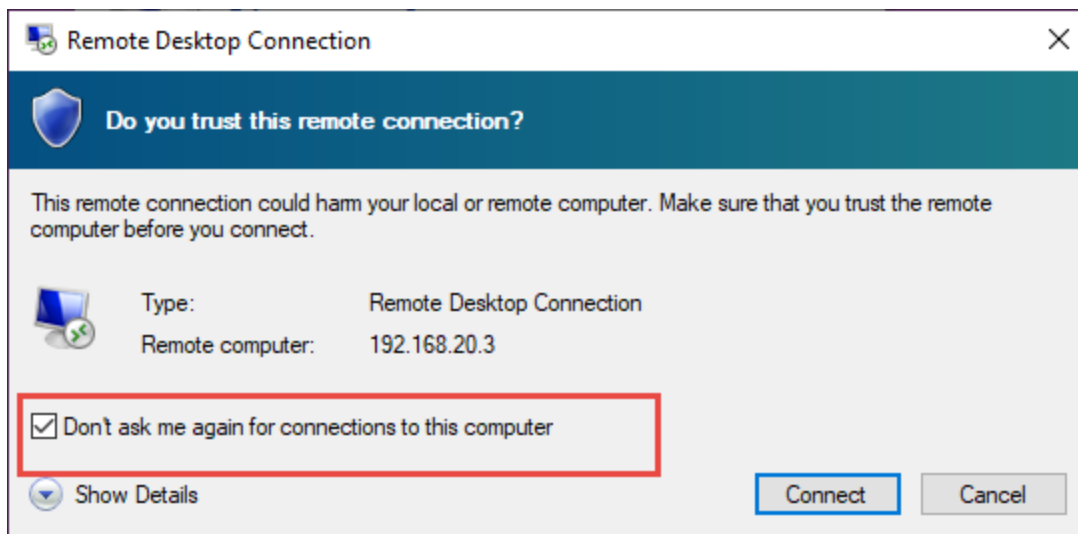
The General tab

If the remote connection you're making is something you will use more than once, you might find it helpful to check **Allow me to save credentials**.

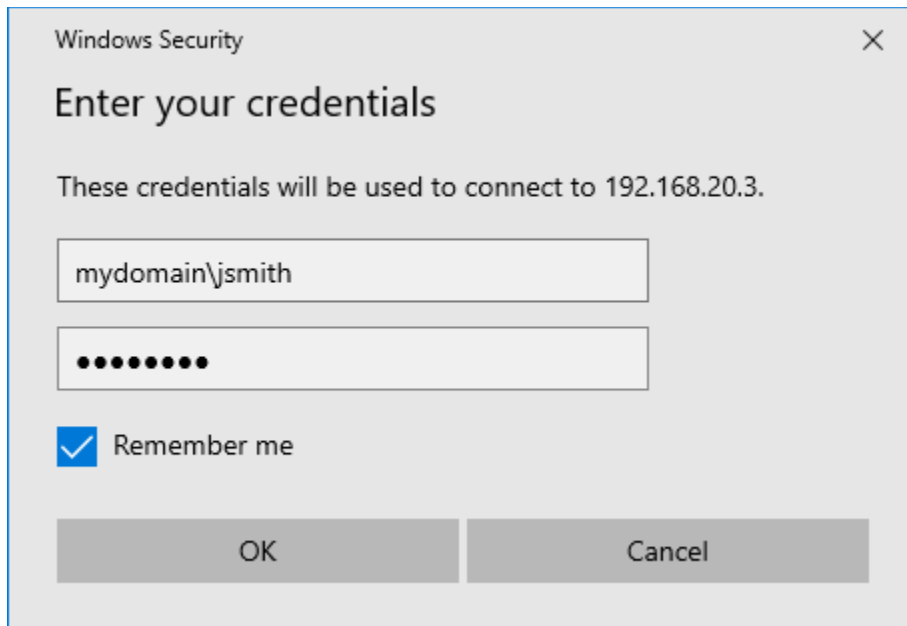


After checking the box (shown above), click **Connect**.

Check the box **Don't ask me again for connections to this computer**.



Enter the credentials required to log into the remote computer. If your remote computer is part of a domain, enter the domain name followed by a backslash before entering your username. Check the box **Remember me** and then click **OK**. The **Remember me** checkbox will save your credentials so you don't have to enter them the next time you connect.

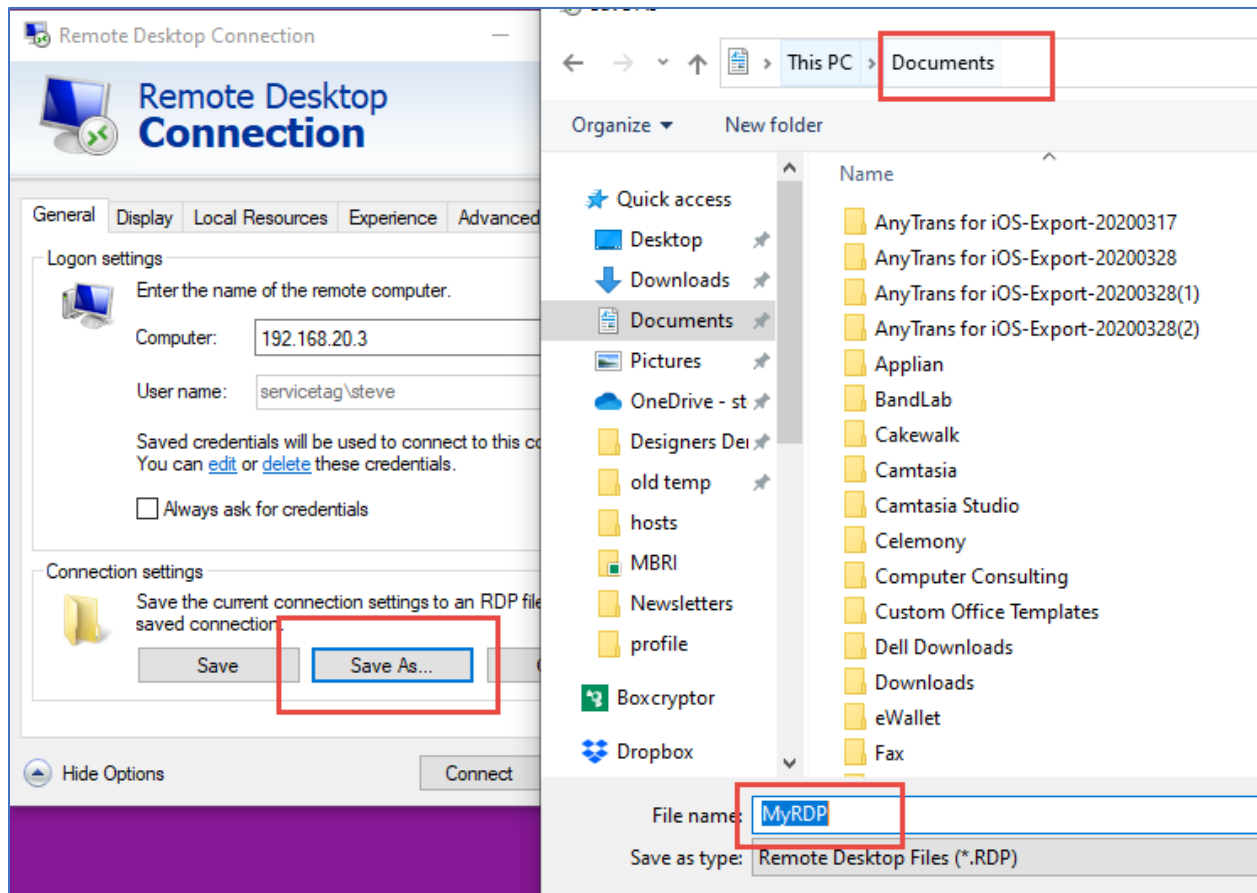


The image shows a Windows Security dialog box titled "Enter your credentials". The dialog box has a close button (X) in the top right corner. Below the title, it says "These credentials will be used to connect to 192.168.20.3.". There are two input fields: the first contains the text "mydomain\jsmith" and the second contains a series of black dots representing a password. Below the input fields, there is a checkbox labeled "Remember me" which is checked. At the bottom of the dialog box, there are two buttons: "OK" and "Cancel".

Create a shortcut to your remote computer

After setting up the credentials in the Remote Desktop Connection window, you may want to create a shortcut you can launch each time you want to make the same connection, without entering credentials again.

Click **Save As** and then give the shortcut a name. Save it into your **Documents** folder.



After saving the shortcut, open the Documents folder and use the **right** mouse button to drag it on to the desktop. When you release the mouse button, choose **Create shortcuts here**. This will create a shortcut on your desktop you can use anytime you want to make the same connection.

The Display tab

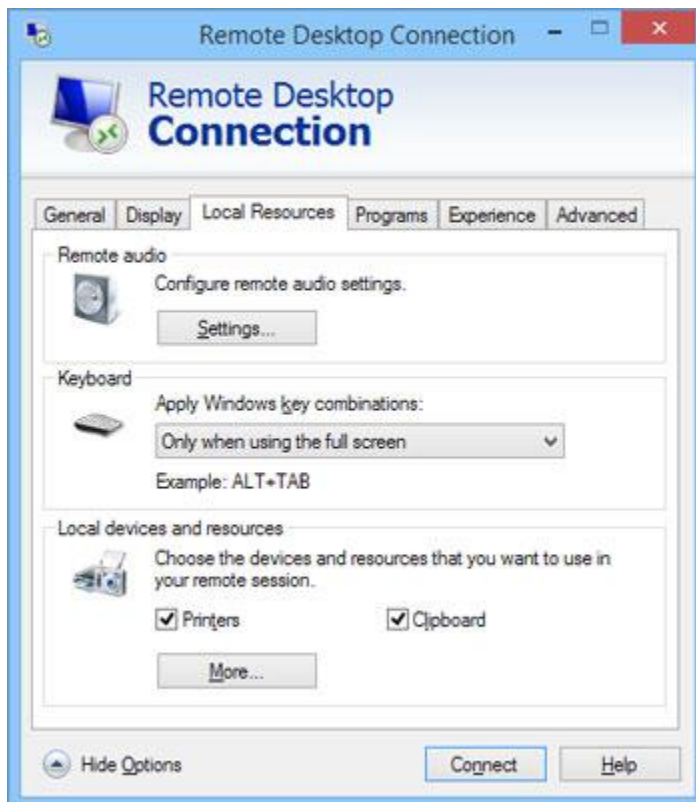
If you're not happy with the display of your remote computer, here are some tools you can use to adjust this.

- **Display Configuration size slider:** Use this control to set the size of your remote desktop display. If you drag the slider all the way to the right, the remote desktop will be displayed in full-screen mode. As you move the slider to the left, various display resolutions will appear. Choose the display size you want the remote computer to open up in.
- **Use All My Monitors for the Remote Session:** If your computer has more than one monitor, select this check box to use all your monitors for the remote session. If you want to open the remote desktop in full-screen mode on just one of your monitors, leave this box deselected.
- **Choose the Color Depth of the Remote Session drop-down list:** Use this drop-down list to choose the color quality of the remote desktop. Over slower connections, reducing the color depth will help performance.

- **Display the Connection Bar When I Use the Full Screen:** The connection bar is a thin bar at the top of the screen that enables you to switch back to normal windowed mode. If you deselected this box, you'll have to remember that you can press Ctrl+Alt+Home to switch between full-screen and windowed mode.

The Local Resources tab

- **Remote Audio:** Click the **Settings** button to bring up a dialog box that lets you choose whether to play audio on the remote computer using the remote computer's sound card, the local computer's sound card, or not at all. This display box also lets you choose whether to allow audio recording during the remote session.



Setting the Local Resources options for Remote Desktop Connection.

- **Apply Windows Key Combinations drop-down list:** This drop-down list lets you specify how Windows keyboard shortcuts are to be interpreted — on the remote computer, on the local computer, or on the remote computer only when it's running in full-screen mode.
- **Local Devices and Resources:** The **Printers** check box lets you access local printers from the remote session. The **Clipboard** check box synchronizes the local and remote clipboards, so that when you copy something to the Clipboard in the remote session, you can return to the local session and paste the Clipboard contents (or vice versa).

You can also share local drives with the remote session. To do so, click **More**, and then select the drives that you want to make available to the remote session, as shown in here.

As with all our recommendations, TekResults is eager to assist you with answers to your questions or to help you engage any of these settings. Just call or email.

Referrals

TekResults owes much of our success to our loyal and enthusiastic clients. It's those of you who tell your friends about us that keep our company growing, and we'd like to say thanks. Just telling someone about us is all it takes. Just let us know you dropped our name and we'll drop a gift card in the mail for you to enjoy a great meal at a [Dante's restaurant](#). See... who said talk is cheap!

The TekResults Team
support@tekresults.com
814-206-0000 Option 1

To unsubscribe send an email to UnsubscribeNewsletter@tekresults.com with unsubscribe to Newsletter in the subject line or click here UnsubscribeNewsletter@tekresults.com

Our Services and Products

- IT problem solving
- Office 365 sales and support
- Business phone systems (Comcast, VoIPly, Vonage, Fortinet)
- Infrastructure design and implementation
- Pre-Sales consulting
- Capacity planning/ system design
- Network cabling
- Security compliance review HIPAA
- Security compliance review PCI
- System installations
- System upgrades
- System auditing / documentation
- Desktop, laptop and monitor and other sales
- Network administration
- Network troubleshooting
- Business consulting software testing and service
- 3rd party software setup and support
- Computer security solutions (including PGP, encrypted mail, secured transactions)
- Custom application development
- Legacy system migration and rewrites
- System integration
- Application integration
- Network installation and integration
- Training and staff development

